



VALVE

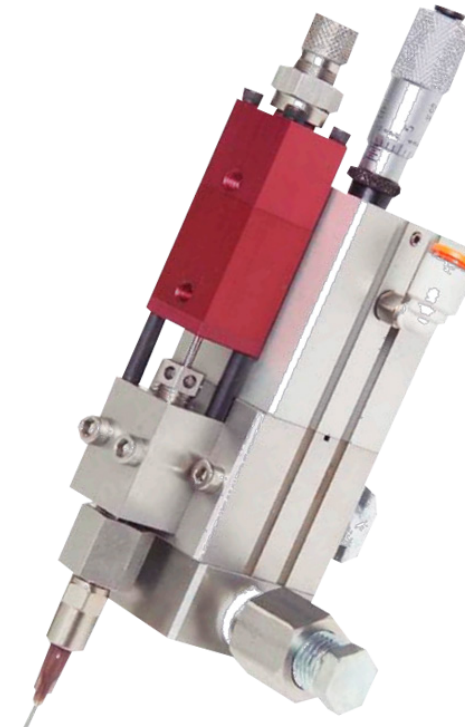
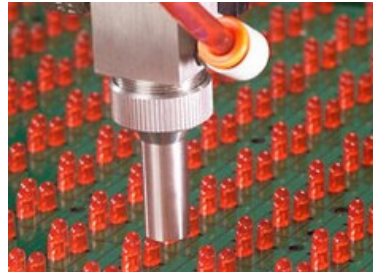
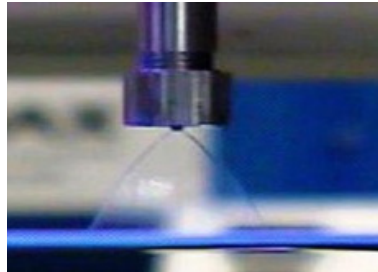
Where precision drives production

VALVES SYSTEMS

■ For all fluids

Acrylic / Activator / Glue / Anaerobic / Paste Solder / Chip Bonder /
 Cyanoacrylate / Epoxy / Epoxy filled / RSS / Grease / Inks / Hiding /
 Oil / Paint / Primer / Reatice RTV / Silicone / Solder paste / Solvents /
 Urethane / UV Glue / Water

* List of non-limiting example



PRESENTATION APPLICATIONS REMARKS

In order to optimize your performance, Gentec offers a wide range of valves with all appropriate control systems, and also all tanks, pumps or pressurized cartridge holders.

Ideal for assembly lines, online production and manufacturing that require high autonomy and high fluid pressure, our volumetric metering valves allow the production of tens of millions cycles without interruption, nor drop formation nor maintenance.

To better meet your degrees of precision, your dispensing volume and your variety of fluids that require full compatibility, we have extended the range to specific valves models.

We are able to dose all kinds of fluids.

Each of our valves are tested in our manufacturing plant.

- | | |
|--|---|
| <ul style="list-style-type: none"> ■ Micro point ■ Lines ■ Potting ■ Gluing ■ Spraying ■ Coating | <p>.....</p> <p>.....</p> <p>.....</p> <p>.....</p> <p>.....</p> <p>.....</p> |
|--|---|

SELECTION GUIDE

Front Closing Valve

Micro Valve

Two Component Valve

Film

Suck Back Valve



OPTIONS	FC100	FC300	FC300-C	FCM100	FCM200	VPX - 450	VPX - 2K	FC100CF	SB200	SB200 - C
Micrometer Option	✓	✓	✓	S	S			S		
Interchangeable Nozzle				✓	✓		✓	✓		
Handheld Operation	✓	✓	✓	✓					✓	✓
APPLICATION	FC100	FC300	FC300-C	FCM100	FCM200	VPX - 450	VPX - 2K	FC100CF	SB200	SB200 - C
Micro Dots				✓	✓	✓				
Dots	✓	✓	✓	✓	✓	✓	✓		✓	✓
Bead / Gasket	✓	✓	✓	✓	✓	✓	✓		✓	✓
Potting	✓	✓	✓			✓	✓		✓	✓
Bonding	✓	✓	✓	✓	✓	✓	✓		✓	✓
Spray										
Coating								✓		

SELECTION GUIDE

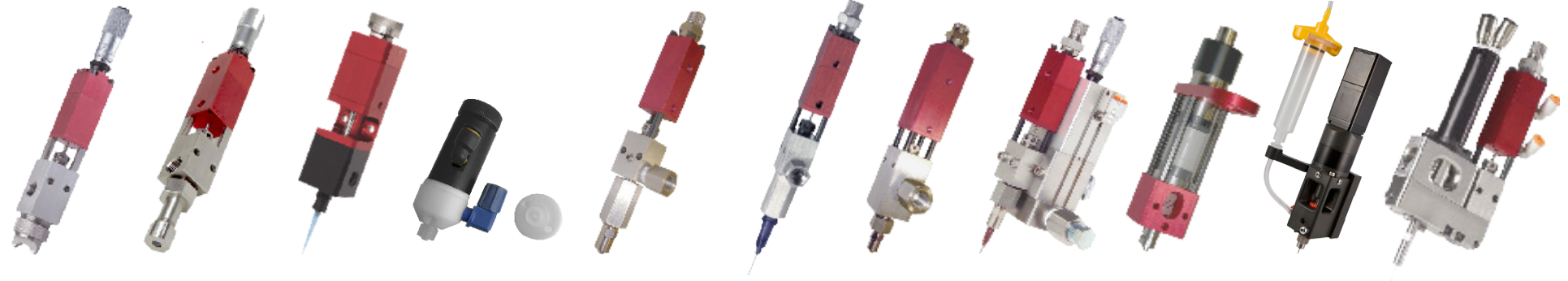
Front Closing
Spray Valve

Diaphragm Valve

Metering Valve

Auger Valve

Jetting



FCS300	FCS300ES	CA300	CA753	MV200	MV250	MV300	MV500	SV200	SVX	RC
--------	----------	-------	-------	-------	-------	-------	-------	-------	-----	----

S	S	✓		✓	S	✓				
---	---	---	--	---	---	---	--	--	--	--

					✓				✓	
--	--	--	--	--	---	--	--	--	---	--

✓	✓	✓	S	✓	✓	✓		✓		
---	---	---	---	---	---	---	--	---	--	--

FCS300	FCS300ES	CA300	CAM200	MV200	MV250	MV300	MV500	SV200	SVX	RC
--------	----------	-------	--------	-------	-------	-------	-------	-------	-----	----

				✓	✓	✓			✓	✓
--	--	--	--	---	---	---	--	--	---	---

		✓	✓	✓	✓	✓		✓	✓	✓
--	--	---	---	---	---	---	--	---	---	---

		✓	✓					✓	✓	✓
--	--	---	---	--	--	--	--	---	---	---

		✓	✓				✓		✓	
--	--	---	---	--	--	--	---	--	---	--

		✓	✓	✓	✓	✓	✓	✓	✓	✓
--	--	---	---	---	---	---	---	---	---	---

✓	✓									
---	---	--	--	--	--	--	--	--	--	--

✓	✓									
---	---	--	--	--	--	--	--	--	--	--

										✓
--	--	--	--	--	--	--	--	--	--	---

Many others models on : www.gentec-benelux.com

FLUIDE	Front Closing Dispense Valve			Micro Valve		Two Component Valve		Film	Suck Back Valve	
	FC100	FC300	FC300-C	FCM100	FCM200	VPX - 450	VPX - 2K	FC100FC	SB200	SB200 - C
Acrylic	✓	✓		✓	✓	✓	✓	✓	✓	
Activator	✓			✓	✓	✓	✓			
Adhesive	✓	✓		✓	✓	✓	✓		✓	
Anaerobic										
Brazing Paste			✓			✓				✓
Chip Bonder				✓	✓	✓				
Conformal Coating	✓			✓	✓			✓		
Cyanoacrylate										
Epoxy	✓	✓		✓	✓	✓	✓		✓	
Filled Epoxy			✓			✓	✓			✓
Flux	✓			✓	✓	✓				
Grease	✓	✓	✓			✓			✓	✓
Heat Sink Compound			✓			✓				✓
Ink	✓			✓	✓	✓		✓		
Masking	✓	✓				✓			✓	
Oil	✓	✓		✓	✓	✓			✓	
Paint	✓	✓				✓			✓	
Primer	✓			✓	✓	✓		✓		
Reactive	✓			✓	✓	✓				
RTV	✓	✓	✓			✓			✓	✓
Silicone	✓	✓	✓			✓	✓		✓	✓
Solder paste			✓							✓
Solvent	✓			✓	✓	✓		✓		
Urethane	✓	✓		✓	✓	✓	✓	✓	✓	✓
UV Curable	✓	✓		✓	✓	✓		✓	✓	
Water	✓			✓	✓	✓		✓	✓	

TO ORDER, PLEASE CALL +32 2 351 1800

Front Closing Spray Valve

Diaphragm Valve

Metering Valve

Auger Valve

Jetting

FCS300	FCS300ES	CA753	CAM200	MV200	MV250	MV300	MV500	SV200	SVX	RC
✓	✓	✓	✓	✓	✓	✓	✓			✓
✓	✓	✓	✓	✓	✓	✓	✓			
✓	✓	✓	✓	✓	✓	✓	✓	✓	✓	✓
		✓	✓							
				✓	✓	✓		✓	✓	✓
✓	✓	✓	✓	✓	✓	✓	✓			✓
		✓	✓							
✓	✓	✓	✓	✓	✓	✓	✓	✓	✓	✓
								✓	✓	✓
✓	✓	✓	✓	✓	✓	✓				✓
✓	✓			✓	✓	✓	✓	✓	✓	✓
								✓	✓	
✓	✓	✓	✓	✓	✓	✓	✓			✓
✓	✓	✓	✓	✓	✓	✓	✓	✓	✓	✓
✓	✓	✓	✓	✓	✓	✓	✓			✓
✓	✓	✓	✓	✓	✓	✓	✓			✓
✓	✓	✓	✓	✓	✓	✓	✓	✓	✓	✓
		✓	✓	✓	✓	✓	✓			
✓	✓			✓	✓	✓	✓	✓	✓	
✓	✓			✓	✓	✓	✓	✓	✓	✓
								✓	✓	
✓	✓	✓	✓	✓	✓	✓	✓			✓
✓	✓	✓	✓	✓	✓	✓	✓			✓
✓	✓	✓	✓	✓	✓	✓	✓	✓	✓	✓
✓	✓	✓	✓	✓	✓	✓	✓			✓

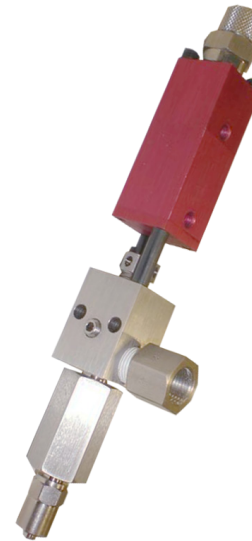
TO ORDER, PLEASE CALL +32 2 351 1800

METERING VALVES (MV)

MV metering valves are linear motion valves. The MV series (200, 250, 300 and 500) offer great precision dispensing and are ideal for one-component material dispensing as dosing, filling, potting or assembly.

Made with quality materials : stainless steel fluid chamber, seals in Viton or Teflon®, divorced valve control body in anodized aluminum.

Each valve is precisely manufactured with high quality standards to ensure the reliability of operations and are laboratory tested before shipment. The design is durable, the maintenance is easy and the calibration is quick.



COMPATIBLE PRODUCTS

Glue / Activator / Lubricants / Oils / RTV / Epoxy / Solvent / Alcohol / Fluid grease / Inks / Painting

DISPENSING NEEDLES

The performance of the dispensing system also depends on the precision of needles. A starter kit (free silicone) is supplied with the valve.

IN OPTION

- XYZ automated dispensing robot :
These 3 or 4 axes tables offer excellent repeatability of the drops.
- Tank under pressure from 1 to 200 L
- Extrusion pump from 1KG to 200KG
- Pressurized cartridge holder

MV200

- Micro-deposits (0,0015cc to 0,0120cc)
- Liquids, fluids and pastes
- Minimum repeatability of $\pm 2\%$
- Manual or automatic applications
- Simple and easy to calibrate
- Applications requiring high precision

Dimension	160mm x 19mm
Weight	340g
Maximum pressure fluid	26,6 Bar
Pressure control	4,8 Bar
Volume filled	0,0015cc - 0,0120cc
Fluid chamber	303 stainless steel
Valve body	Hard anodized aluminum
Rate	> 600 cycles / min.



MV250

- Small deposits (0,0001cc to 0,0120cc)
- Liquids, fluids and pastes
- Minimum repeatability of $\pm 2\%$
- Simple and easy to calibrate
- Manual or automatic applications
- Provides excellent repeatability of the drops

Dimension	162mm x 19mm
Weight	227g
Maximum pressure fluid	20,7 Bar
Pressure control	4,8 Bar
Volume filled	0,0015cc - 0,0120cc
Fluid chamber	303 stainless steel
Valve body	Hard anodized aluminum
Rate	> 600 cycles / min.

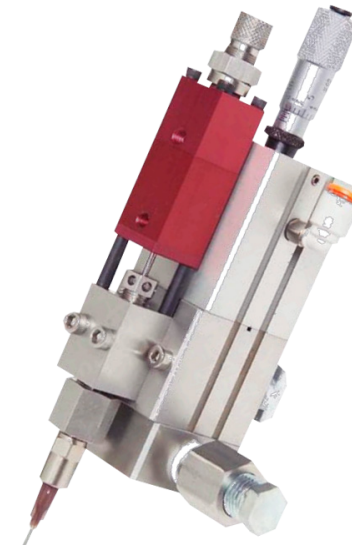
METERING VALVES (MV)



MV300

- Average deposits [0,010cc to 0,125cc]
- Liquids, fluids and pastes
- Minimum repeatability of $\pm 1\%$
- Simple and easy to calibrate
- Manual or automatic applications
- Applications requiring high precision

Dimension	203mm x 29,2mm
Weight	277g
Maximum pressure fluid	20,7 Bar
Pressure control	4,8 Bar
Volume filled	0,010cc - 0,125cc
Fluid chamber	303 stainless steel
Valve body	Hard anodized aluminum
Rate	> 600 cycles / min.



MV500

- Large deposits [0,10cc to 4 cc]
- Liquid, fluid, pasty and very thick
- A minimum repeatability of $\pm 2\%$
- Reinforced pressure system for emptying the fluid chamber for very thick product
- 5: 1 boost

Dimension	159mm x 59 mm
Weight	1361g
Maximum pressure fluid	34,47Bar
Pressure control	5,5 to 8Bar
Volume filled	0,10cc - 4cc
Fluid chamber	303 stainless steel
Valve body	Hard anodized aluminum
Rate	> 600 cycles / min.

DIAPHRAGM VALVES (CA)

CA dispensing valves are diaphragm valves. The CA series (300, 200 and 100) offer great precision dispensing and are ideal for the determination of mono-component products for dosing, filling, potting or assembly.

Made with quality materials: Delrin and Teflon® for the fluid chamber, seals in Teflon® or Viton and a patented diaphragm silicone covered with a Teflon film. The valve body is hard-anodized aluminum with an ergonomic shape and size. Each valve is precisely machined with high quality standards to ensure the reliability of operations and are laboratory tested before shipment. The design is durable, maintenance is easy and calibration is quick.

COMPATIBLE PRODUCTS

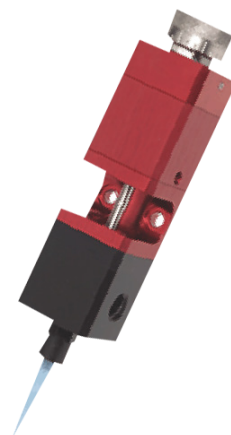
Cyanoacrylates / Anaerobic / Glue / Activator / Lubricants / Oils / Epoxies / Solvents - Alcohols / Fluid Grease / Ink - Painting / Electrolyte

DISPENSING NEEDLES

The performance of the dispensing system also depends on the precision of needles. A starter kit (free silicone) is supplied with the valve.

IN OPTION

- XYZ automated dispensing robot : These 3 or 4 axes tables offer excellent repeatability of the drops.
- Tank under pressure from 1 to 200 L
- Extrusion pump from 1KG to 200KG
- Pressurized cartridge holder



CA300

- Small to medium quantities
- Liquids fluids
- Ideal for automated applications
- Steering dual effect
- Accurate and repeatable with a perfect seal
- Automatic applications or pedal
- Only the drive of the diaphragm is moving, which implies a very low maintenance

Dimension	128mm x 29.21mm
Weight	265,2g
Maximum pressure fluid	4,1 bar
Control pressure	4,1 – 6,9 bar
Fluid chamber	Delrin® and Teflon®
Valve body	Hard anodized aluminum
Diaphragm	Silicone coated Teflon®
Rate	> 600 cycles / min.



CAM200

- 100% manual. Dispense by «operator judgement»
- Small to large quantities
- Liquids fluids
- Ideal for applications that require operator action filed by constant rate
- Ergonomic grip
- Simple and quick to start up. Few maintenance.
- Only 100gr

Dimension	163.83 mm x 55.88 mm
Weight	105g
Maximum pressure fluid	7 bar
Control pressure	4,1 – 6,9 bar
Fluid chamber	Delrin® and Teflon®
Valve body	Hard anodized aluminum
Diaphragm	Silicone coated Teflon®
Rate	NA

DIAPHRAGM VALVES (CA)



REMARKS

.....

.....

.....

.....

.....

.....

.....

.....

.....

.....

.....

.....

.....

.....

.....

.....

.....

.....

.....

.....

.....

CA753

- Small to large quantities
- Liquid fluids
- Rate more than 600 cycles per minute
- Lightweight and compact
- Few or no maintenance
- Ideal for dispensing cyanoacrylates, anaerobic and other reactive fluids.

Dimension	86.02 mm x 43.90 mm
Weight	174.1
Maximum pressure fluid	7 bar
Control pressure	5 - 6.9 bar
Fluid chamber	Acetal
Valve body	Hard anodized aluminum
Diaphragm	Inert polymer
Rate	> 600 cycles / min.

HIGH PRESSURE VALVES (FC) (SB 200)

FC metering valves and SB 200 are high-pressure valves. The FC and SB 200 series valves were designed specifically for products with high / medium viscosity and have a very good resistance to very high pressures.

Designed with quality materials: 303 stainless steel (316 on request) for the fluid chamber, seals in Viton or Teflon®, divorced valve control body in anodized aluminum

Each valve is precisely manufactured with high quality standards to ensure the reliability of operations and are laboratory tested before shipment. The design is durable, the maintenance is easy and calibration is quick.

COMPATIBLE PRODUCTS

Grease / Sealant / Lubricant / RTV / Epoxy / Silicone / Glue

DISPENSING NEEDLES

The performance of the dispensing system also depends on the precision of needles. A starter kit (free silicone) is supplied with the valve.

IN OPTION

- XYZ automated dispensing robot :
These 3 or 4 axes tables offer excellent repeatability of the drops.
- Tank under pressure from 1 to 200 L
- Extrusion pump from 1KG to 200KG
- Pressurized cartridge holder



FC100

- Medium quantities
- Liquids, fluids and pastes.
- High resistance to pressure (241bar)
- Minimum repeatability $\pm 5\%$
- Simple and easy to calibrate
- Manual or automatic applications
- Suck - Back

Dimension	152mm x 19,5mm
Weight	170,2g
Maximum pressure fluid	241bar
Control pressure	2,5 à 7 bar
Fluid chamber	Stainless Steel
Valve body	Hard anodized aluminum
Joints	Viton and Teflon®
Fluid input	1 / 8NPT editable
Rate	> 600 cycles / min.



FC300

- Significant quantities
- Liquids, fluids and pastes.
- High resistance to pressure (241bar)
- Minimum repeatability $\pm 5\%$
- Simple and easy to calibrate
- Manual or automatic applications
- Suck - Back

Dimension	201mm x 29,21mm
Weight	539g
Maximum pressure fluid	241 bar
Control pressure	2,5 à 7 bar
Fluid chamber	Stainless Steel
Valve body	Hard anodized aluminum
Joints	Viton and Teflon®
Fluid input	1 / 4 NPT
Rate	> 600 cycles / min.

NO CONTACT VALVE (FCM)



SB 200

- High pressure type «snuff back»
- Average high viscosity products
- 2x more speed higher than the valves of the FC series
- For fluids with aggressive expansion
- Provided with a carbide stem to improve the usury resistance

Dimension	115mm x 25mm
Weight	430g
Maximum pressure fluid	> 100 Bar
Control pressure	4.1 à 6.9 Bar
Fluid chamber	Inox
Valve body	Hard anodized aluminum
Inlet	1/4" NPT Female
Outlet	Male Luer Lock or 1/4" NPT Female

The FCM100 is a non contact valve for dispensing dots and lines of low to medium viscosity material with a substrate.

The complete system includes an FCM average deposits valve, a simple or expanded controller (trigger pedal or 5V signal), as well as fittings, hoses and other accessories.

Usually a tank, a cartridge or pump provides the feeding to this valve. The quality of each component, the inspection and quality control ensure reliable overall performance and durability. Simple and easy to calibrate, FCM valve is used in automatic applications on platforms

APPLICATIONS FCM100 ET RC200

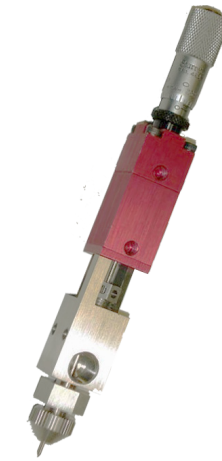
Silicone deposited before insertion of a piston in a syringe.
Dispense solvent in a syringe. Dispense paint in a tube.

DISPENSING NEEDLES

The performance of the dispensing system also depends on the precision of needles. A starter kit (free silicone) is supplied with the valve.

IN OPTION

- XYZ automated dispensing robot :
These 3 or 4 axes tables offer excellent repeatability of the drops.
- Tank under pressure from 1 to 200 L
- Extrusion pump from 1KG to 200KG
- Pressurized cartridge holder



FCM100

- Amount of very small volume deposits
- Valve designed for jetting. Dots and lines.
- Low to medium viscosity
- Minimum accuracy of $\pm 2\%$
- Distance: 1 to 100 mm from the support
- High speed dosing

Dimension	152 mm x 19 mm
Weight	340 g
Maximum pressure fluid	240 bar
Control pressure	2 à 7 Bar
Fluid chamber	Inox 303
Valve body	Hard anodized aluminum
Range of viscosity	1 cps - 20 000 cps
Fluid input	1 / 8 NPT
Rate	> 600 cycles / min.

AUGER VALVE (FCS) (RC200)

LOW VOLUME LOW PRESSURE : LVLP TECHNOLOGY

FCS series valves and RC 200 were specifically designed to uniformly perform a film of product without residual elements.

They are ideal for dispensing low to medium viscosity single component materials and mark-tracking applications. These low-pressure spray valves are stainless steel and incorporate the technology of double-acting valves associated with a compact pneumatic motor and a custom spray nozzle.

Designed with quality materials: 303 stainless steel for the fluid chamber, or Viton seals Teflon® separated valve body in anodized aluminum.

COMPATIBLE PRODUCTS

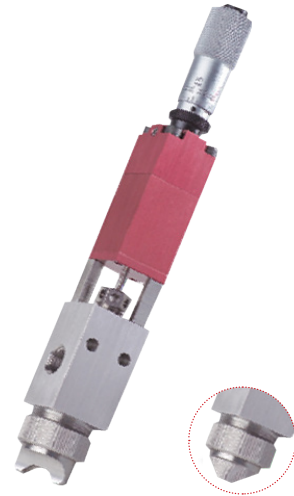
Coating / Fluid Grease / Marking Ink / Lubricant / Oil / Silicone / Solvent - Alcohol / Adhesive / Ink - Painting / Activator

DISPENSING NEEDLES

The performance of the dispensing system also depends on the precision of needles. A starter kit (certified silicone) is supplied with the valve.

IN OPTION

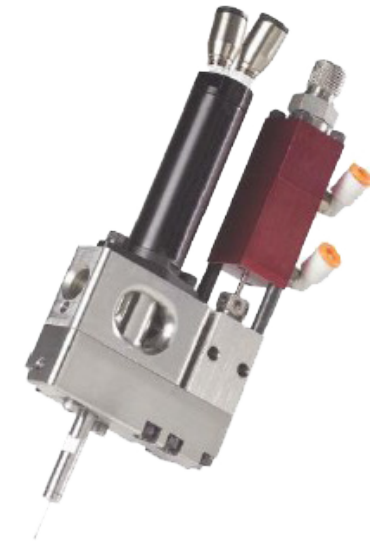
- XYZ automated dispensing robot :
These 3 or 4 axes tables offer excellent repeatability of the drops.
- Tank under pressure from 1 to 200 L
- Extrusion pump from 1KG to 200KG
- Pressurized cartridge holder



FCS300

- Small to medium quantities
- Works on the principle of low pressure - low volume
- Separation of fluid and air to the valve output
- Points of 5 mm diameter
- Manual or automatic applications

Dimension	168.4 mm x 22 mm
Weight	170g
Maximum pressure fluid	> 200 bar
Control pressure	2,1 à 7 bar
Fluid chamber	Inox 303
Joints	Viton and Teflon
Efficiency	99%
Rate	> 600 cycles / min.



RC 200

- Depositing neat film and uniform films
- Liquid and fluid products
- Minimum accuracy of + -2%
- 360 ° coverage
- Interchangeable nose
- Homogeneous distribution

Dimension	229,1mmx121,2mm
Weight	1361g
Maximum pressure fluid	> 80 Bar
Control pressure	5,5 à 8 Bar
Fluid chamber	Inox 303
Valve body	Hard anodized aluminum
Rate	> 600 cycles / min

AUGER VALVE (SV200) (SVX)

The SV200 series valves have been designed specifically for charged products containing particles and specific viscosity materials that may for example deteriorate under pressure. The pressure on the product being very low serves only to drive the product into the pitches.

Micro Valve SVX is specifically designed to dispense the micro volumes product in an accurate and repeatable manner.



*Exist in 8, 16 et 32 pitch



COMPATIBLE PRODUCTS SV200

Cyanoacrylates / Anaerobic / Glue / Activator /
Lubricants / Oils / Epoxies / Solvents - Alcohols / Fluid
Grease / Ink - Painting / Electrolyte

DISPENSING NEEDLES

The performance of the dispensing system also depends on the precision of needles. A starter kit (free silicone) is supplied with the valve.

IN OPTION

- XYZ automated dispensing robot :
These 3 or 4 axes tables offer excellent repeatability of the drops.

- Very small to medium amounts
- Charged products, solder pastes, adhesives, epoxies
- Deposits of about 0,0001 cc
- Minimum 3% accuracy
- 3 versions : very hard stainless steel screws in 32, 16 and 8 pitch depending on the size of the filler and the viscosity

Dimension	139.7 mm x 69mm
Weight	265g
Maximum pressure fluid	6,9 Bar
Fluid chamber	SS
Engine	24V DC Servo
Yield	99%
Auger Screw	Reinforced Steel hardness
Rate	> 400 cycles / min.

SVX

- Designed for micro volumes
- The brushless motor controls the rotation of the screw
- Programmable encoder
- More than 57,000 increment per 360degree revolution
- Fixed distribution or footed needle
- Auger and fluid chamber in carbide

Dimension	167 mm x 72 mm
Weight	367g
Maximum pressure fluid	6,9 Bar
Fluid chamber	Inox
Engine	Servo Motor
Yield	0.13mm
Worm	Steel reinforced hardness
Rate	> 600 cycles / min.

TWO COMPONENT VALVES (PC) (MD2)

PC series valves are ideal for the dispensing of points, cords, potting or encapsulation. They can be integrated with an automated dispenser or mixer according to your operations and are compatible with static mixers. In addition, the valves are separated to avoid a possible contamination of the control part.

MD2 distribution valve mixes and dispenses precisely waterproof products and multi-component adhesives. It has a full modular design adapted to different installation requirements and no special tools are required.

COMPATIBLE PRODUCTS

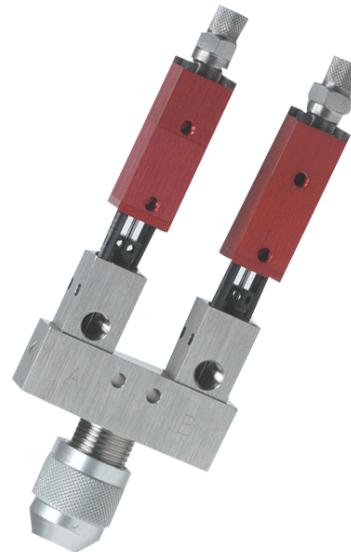
Epoxies / Urethanes / Silicones and other viscous products

DISPENSING NEEDLES

The performance of the dispensing system also depends on the precision of needles. A starter kit (free silicone) is supplied with the valve.

IN OPTION

- XYZ automated dispensing robot :
These 3 or 4 axes tables offer excellent repeatability of the drops.
- Tank under pressure from 1 to 200 L
- Extrusion pump from 1KG to 200KG
- Pressurized cartridge holder
- Gears pump



PC100

- Stainless steel fluid body
- Divorced valve to avoid possible contamination
- Fluid part and portion control completely separated to prevent pollution and residue
- Reversible valve seat
- Closing the valve assisted by spring for secure distribution
- High pressure capability. Uniform treatment
- For single ratios 1: 1

Dimensions	167.64mm x 22.23 mm
Weight	623g
Range of viscosity	1 cps - 400,000 cps
Control pressure	2,1 à 7 bar
Maximum pressure	34.7bar
Fluid chamber	Inox



MD2

- Suitable for a wide range of products
- Reduces maintenance time and costs while maximizing uptime
- Designed with fewer parts. Easy to clean
- Streamlines maintenance and servicing
- Fully modular design which adapts to different installation requirements
- No specific tools needed

More information about this valve in chapter

[Dispensing systems](#)


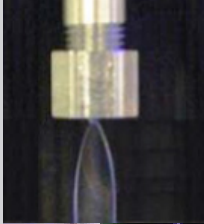



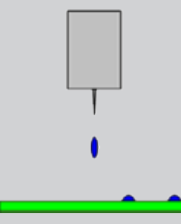

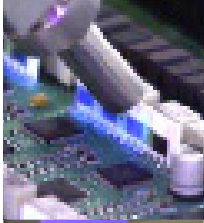
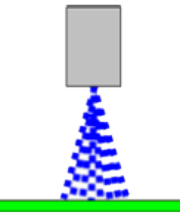

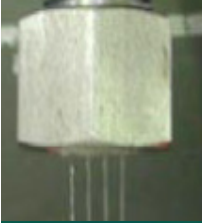
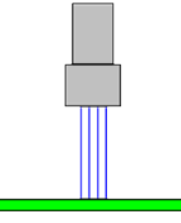




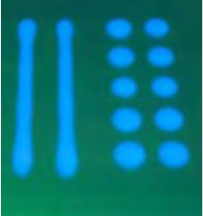
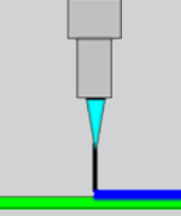
or

www.gentec-benelux.com

Manual dispense gun

Lever-Actuated Dispense Valve

SELECTION GUIDE : COATING VALVE

VALVE	IMAGE	DISPENSE	PATTERN	APPLICATION	VALVE	IMAGE	DISPENSE	PATTERN	APPLICATION
FC100-CF Film Coat Valve				For Solvent Based Material or Low Viscosity Fast Large Area Coating to PCB Side Selective Coating to Leads of QFP, SOP	FCM100 Micro Dispense Valve				For Solvent Based Material or Low Viscosity «Non-Contact» Dispensing Small Dots, Thin Line
FCS300-ES Atomizing Spray Valve				For All Coatings Fine Edge Definition Thin Coating Thickness Covering 3D Shaped Component Selective Spray Coating	FC100C4 Flow Coat Valve				For Solvent Based Material or Low Viscosity Fast, Large Area Coating Shower for 3D Shaped Component
FCS300-F Atomizing Spray Valve				For All Materials Thin Thickness Coating Covering 3D Shaped Component Wide Spray Pattern	FC100- MC Needle Dispense Valve				For All Materials Outline Dispense before Area Coating Dam & Fill Dispense Beads or Dots

VALVE CONTROLLER : 700ETC



PRESENTATION

Versatile, convenient and fast handling, controllers 700 ETC, ensure the control of dosage with high accuracy.

Featuring a high-performance and fast solenoid and double control function (open and close), the standard controller 700 ETC ensures perfectly repeatable actions millisecond with very short response times.

The «Teach» function to approach by learning the proper setting and save it in action. Several programs are recordable.

All communication with any PLC or interface by simply exchanging contact closure or 5V-24V reported. The result is a quick and easy installation as well as a mastery of dosing parameters and immediate visual check of the outcome of removal.

In addition to collecting all the standard controller functions, advanced controller has a controller and a memory that allows for removal programs in way consistent with the problems of specific products such as dosing sequence status information of the valve, or clocked simultaneous piloting of several valves, or simultaneous measurements of other elements of type sensors or detectors ...



Gentec Benelux

Rue de L'Industrie, 12 B-1400 Nivelles

Phone : +32 2 351 1800

Fax : +32 2 351 1962

Email: webinfo@gentec.be

www.gentec-benelux.com

The fluid dispensing being the cornerstone of numerous production chains, Gentec emphasis on this specific need by proposing a wide range of innovative and efficient dispensing equipments.

French leader on this area, its specialty is to design and implement solutions to put down and dispense every type of fluid in an accurate and repeatable way during the process of assembly. Thanks to its vast field of activity and application, no doubt that Gentec will know how to resolve your most complex problems of deposit and brings you the suited recommendations to optimize your production's capacities.

Persuaded that our expertise must be complete, we also supply you tools in order to prepare your fluid (mixture and degassing) and polymerize your glues (UV sunstroke). Our range of consumables (needles, syringes, static mixers etc are also considered as the best in the market.

So we provide you every type of dispensing equipments to allow you to use efficiently your fluids regardless of the viscosity : glues, greases, lubricants, pastes, solvents, silicones, inks, activators, RTV, paints.

Present in more than 20 countries in the world, performance, quality, service and technology are at the center of all our concerns.