

90° Angle Adapter



This optical accessory is ideal for applications including:

Fixtured Assembly Operations

Automated Assembly Process

Restricted Spaces or Access

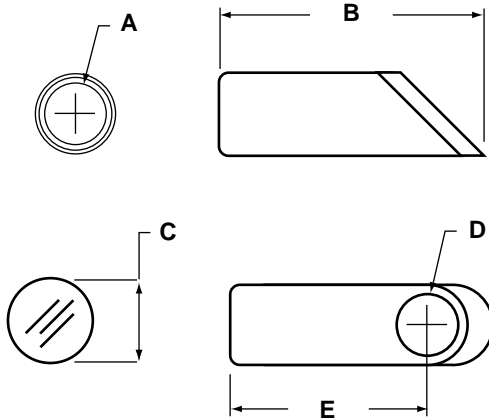
EXFO's 90° Angle adapters couple to standard EXFO liquid filled light guides to redirect the light at right angles to the light guide. They are used when space constraints do not allow the light guide to bend within the minimum radius specifications

Fiber-optic test,
measurement, monitoring
and automation solutions

EXFO

Specifications

Configuration:	Angle adapters are available with and without internal focussing lenses
Throughput:	Approximately 70% of the output of a 5mm single liquid filled light guide for a double lensed adapter. Approximately 60% of the output of a 5mm single liquid filled light guide for an adapter with no lens
Divergence:	Approximately 30 degrees for a double lensed adapter. Approximately 30 degrees for an adapter with no lens



Adapter		Dimensions				
		A	B	C	D	E
3mm	in mm	0.20 5.1	1.20 30.5	0.35 8.9	0.20 5.1	0.90 22.9
5mm	in mm	0.28 7.1	1.24 31.5	0.39 9.9	0.28 7.1	0.93 23.6
8mm	in mm	0.39 9.9	1.38 35.1	0.59 14.9	0.39 9.9	0.97 24.6
5mm (1 lens)	in mm	0.28 7.1	2.5 63.5	0.70* 17.8*	0.39 9.9	1.97 50.0
5mm (2 lens)	in mm	0.28 7.1	2.5 63.5	0.70* 17.8*	0.39 9.9	1.97 50.0

*square instead of round

All dimensions are shown in inches and millimeters. Dimensions relate to the standard EXFO Angle Adapters and are for the purpose of providing fixturing and clearance detail.

Customized solutions are available upon request

EXFO PHOTONIC SOLUTIONS	2260 Argentinia Road	Mississauga (Ontario) L5N 6H7	Tel.: 1 905 821-2600 . Fax.: 1 905 821-2055
TOLL-FREE	Tel.: 1 800 668-8752		
CORPORATE HEADQUARTERS	465 Godin Avenue	Vanier (Quebec) G1M 3G7 CANADA	Tel.: 1 418 683-0211 . Fax.: 1 418 683-2170
EXFO AMERICA	1201 Richardson Drive, Suite 260	Richardson TX 75080 USA	Tel.: 1 800 663-3963 . Fax.: 1 972 907-2297
EXFO EUROPE	Le Dynastuer, 10/12 rue Andras Beck	92366 Meudon la Forêt Cedex FRANCE	Tel.: +33.1.40.83.85.85 . Fax.: +33.1.40.83.04.42
EXFO ASIA-PACIFIC	151 Chin Swee Road, #03-29 Manhattan House	SINGAPORE 169876	Tel.: +65 333 8241 . Fax.: +65 333 8242
TOLL-FREE (USA and Canada)	Tel.: 1 800 663-3936	www.exfo.com • info@exfo.com	

EXFO is certified ISO 9001 and attests to the quality of these products. This device complies with Part 15 of the FCC rules. Operation is subject to the following two conditions: (1) this device may not cause harmful interference, and (2) this device must accept any interference received, including interference that may cause undesired operation. EXFO has made every effort to ensure that the information contained in this specification sheet is accurate. However we accept no responsibility for any errors or omissions, and we reserve the right to modify design, characteristics and products at any time without obligation. Units of measurement in this document conform to SI standards and practices. **Contact EXFO for prices and availability or to obtain the phone number of your local EXFO distributor.** For the most recent version of this spec sheet, please go to the EXFO website at <http://www.exfo.com/support/techdocs.asp> In case of discrepancy, the Web version takes precedence over any printed literature.

